

KOH 40-R High CRI Fixture Guide

Indoor | Recessed | Output up to 1170lm

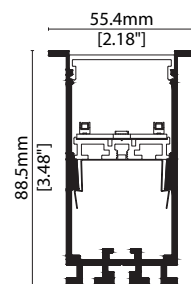


Key applications

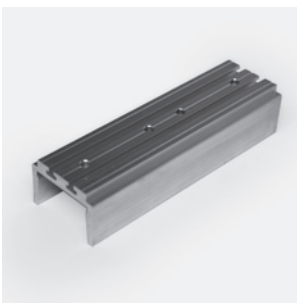
- ✓ Ceiling
- ✓ Office lighting
- ✓ Downlighting
- ✓ Wall grazing
- ✓ Interior

Key features

- ✓ Control Gear
- ✓ Extensive CCT range
- ✓ Custom lengths
- ✓ High lumen efficacy
- ✓ Decorative
- ✓ IP40
- ✓ Diffusion: Homogenous
- ✓ Lensed
- ✓ Direct view



MOUNTING METHODS



KKTJ-03 Joining bar



KKBK-19 Fixing bracket

KOH 40-R High CRI

Specification sheet

KKDC



Dimensions	H88.5/W55.4/L584-1704mm (H3.48/W2.18/L22.99-67.09in)
PCB Cut-point	560/1120/1680mm (22.05/44.09/66.14in)
LED Pitch	-
Chip	k-line
Cover/Optics	Diffused (130°) / Dark Louvre (60°)
CCT	k-line : 1900K/2100K/2300K/2500K/2700K/3000K/3500K/4000K/5000K
LED binning	k-line : 3-step MacAdam Ellipse
CRI	≥ 90
Lifetime	50,000 hours @ 25°C (50,000 hours @ 77°F)
Operating temp	T _a = -20 to 45°C (T _c max = 62.9°C) T _a = -4 to 113°F (T _c max = 145.2°F)
IP Rating	IP40
Finish	Matt Silver/Grey/White/Black/Bronze Powder Coated
Mounting	Recessed mounting via bracket
Power feed	Male/female connectors
Control	0-10V/DALI (Integrated Power Supply)



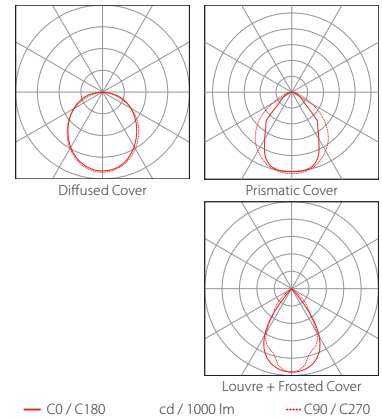
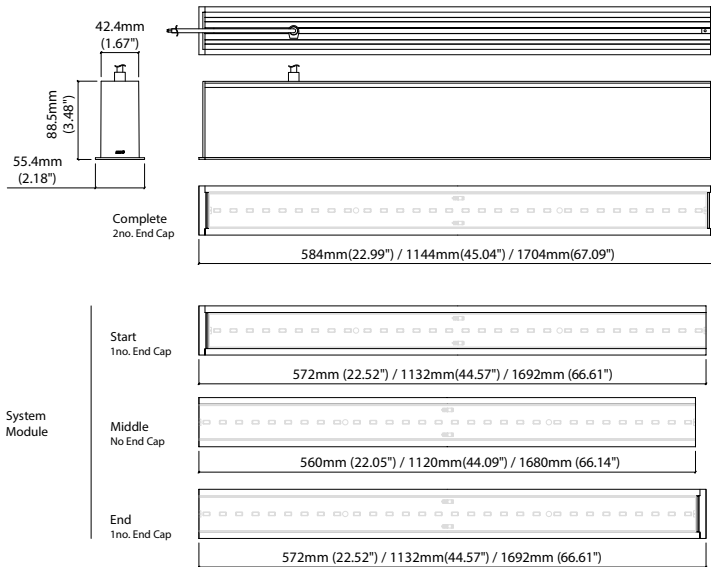
LED Grading Key

Base Grade

k-line
3-step commercial range
Energy Star CCTs

Power consumption	Supply voltage	Supply current	Power factor:
17.5W	240V AC 50Hz	0.08A	0.925 @ 239.99V, 50Hz

	Diffused Cover	Prismatic Cover	Louvre + Frosted Cover	CRI	R9	Rf	Rg
h-line	990lm 56.8lm/W	1170lm 66.9lm/W	480lm 29lm/W	93	66	92	99



Data derived from independent UKAS/IESNA LM-79-08 accredited testing of production samples.

KOH 40-R High CRI

Code Table



FIXTURE

Model	Finish	Cover	Grade	LED Type ¹	Colour (CCT)	Length Availability ²	Lens	Module Type*	Control Type	Input													
KOH 40-R	GB	Matt White Paint	MW	Louvre	T	High CRI 630A	k	k	High CRI	630A	1900K	19	580mm	m	0580	Frosted lens	FL	Complete	FE	0-10V	4	AC 100V	b
		Matt Silver Paint	MS	Diffused	C						2100K	21	1140mm	m	1140			Start	LE	DALI	3	AC 220-240V	d
	Matt Grey Paint	MG	Prismatic	G	2300K						23	1700mm	m	1700	Middle			XE	No Controller	5	No PSU	I	
	Matt Black Paint	MB			2500K						25	22.05in	i	0022	End			RE					
	Bronze Paint	BP			2700K						27	44.09in	i	0044									
	3000K	30			66.14in						i	0066											
	3500K	35																					
	4000K	40																					
	5000K	50																					

¹ Refer to **LED Grading Key** on **Specification sheet** page

² Refer to **Length Availability List** or enter total run length instead of length code

* Module Type (various fixture lengths)

Complete	FE	
Start	LE	
Middle	XE	
End	RE	

Code Example:

GB	-	MW	-	C	-	k	-	630A	-	30	-	m	-	1140	-	FL	-	FE	-	4	-	d
KOH 40-R		Matt White Paint		Diffused		k		High CRI		3000K		m		1140mm		Frosted lens		Complete		0-10V		AC 220-240V

ACCESSORIES

Mounting Accessories

KKJT-03	Joining Bar
KKBK-19	Fixing bracket

* Refer to **Mounting accessories** on **Accessories** pages

Connection Accessories

KKCN-26	Power Feed Cable
KKCN-31	Power Feed Cable (Non-Fabric)

* Refer to **Power feed** on **Accessories** pages

PSU/Driver

0-10V/DALI (Integrated Power Supply)

Colour	LED	Lumen/module	Wattage	Spec Doc	Length
Single CCT	630A	1170/module	17.5	KOH 40-R High CRI	560/1120/1680mm (22.05/44.10/66.14in)
	957A	2190/module	33.5	KOH 40-R High Power	560/1120/1680mm (22.05/44.10/66.14in)

* Performance data: k-line, Prismatic Cover, 3000K, 580mm module

KOH 40-R High CRI

Length Availability List

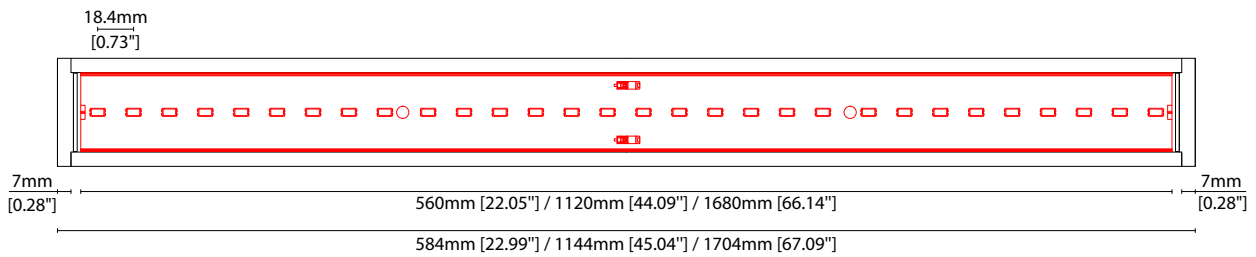


Length Code		Fixture Length ¹		LED Strip ²		End Cap Dimension ³		Wattage (W)	Output (lm)
Metric	Imperial(US)	Metric	Imperial(US)	Metric	Imperial(US)	Metric	Imperial(US)		3000K (Test Data)
m0584	i0023	584mm	22.99in	560mm	22.05in	14mm	0.55in	17.50	1171
m1144	i0045	1144mm	45.04in	1120mm	44.09in	14mm	0.55in	35.00	2342
m1704	i0067	1704mm	67.09in	1680mm	66.14in	14mm	0.55in	52.50	3512

¹ Actual total overall length of light fixture (LED strip + end caps + void/wire hole)

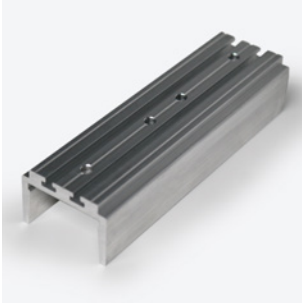
² Actual length of PCB strip

³ Actual length of 2x end caps



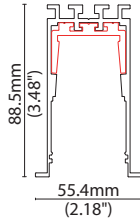
MOUNTING ACCESSORIES

Note: Accessories are to be ordered separately with corresponding code shown below.



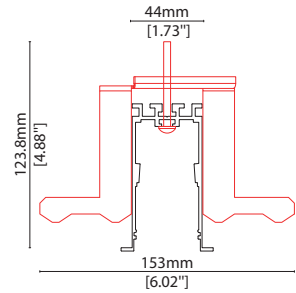
KKJT-03

Joining bar
(allow 1 per join)
L120/W38.3/H26.3mm
(L4.72/W1.50/H1.03")



KKBK-19

Fixing bracket
(allow 2 per metre/40in)
S/Steel finish
L50/W153/H118mm
(L1.97/W6.02/H4.65")



POWER CABLE



KKCN-26

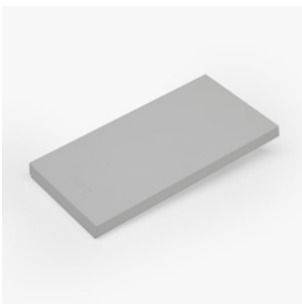
Power Feed Cable



KKCN-31

Power Feed Cable (Non-Fabric)

END CAPS AND LIGHT LEAK TAPE



- KKEC-S1 (2no.) - End cap pair (Mat white)
- KKEC-S2 (2no.) - End cap pair (Mat silver)
- KKEC-S3 (2no.) - End cap pair (Mat gray)
- KKEC-S4 (2no.) - End cap pair (Mat black)
- KKEC-S5 (2no.) - End cap pair (Bronze)



Black tape (prevents light leak)